

Assessment of biodiverse grassland: Comments to ISCC Guidance Document Supplementing ISCC EU 202

Ecologist M. Sc. Elson Fernandes de Lima
Casa da Floresta Assessoria Ambiental Ltda.



About us

Casa da Floresta Assessoria Ambiental

Our team

Private Organization

Biologists, Ecologists, Forest Engineers and Support Staff

33 professionals

Our projects

Biodiversity assessment

Forest restoration

Environmental monitoring: biotics and abiotics

Innovative Spatial Modelling

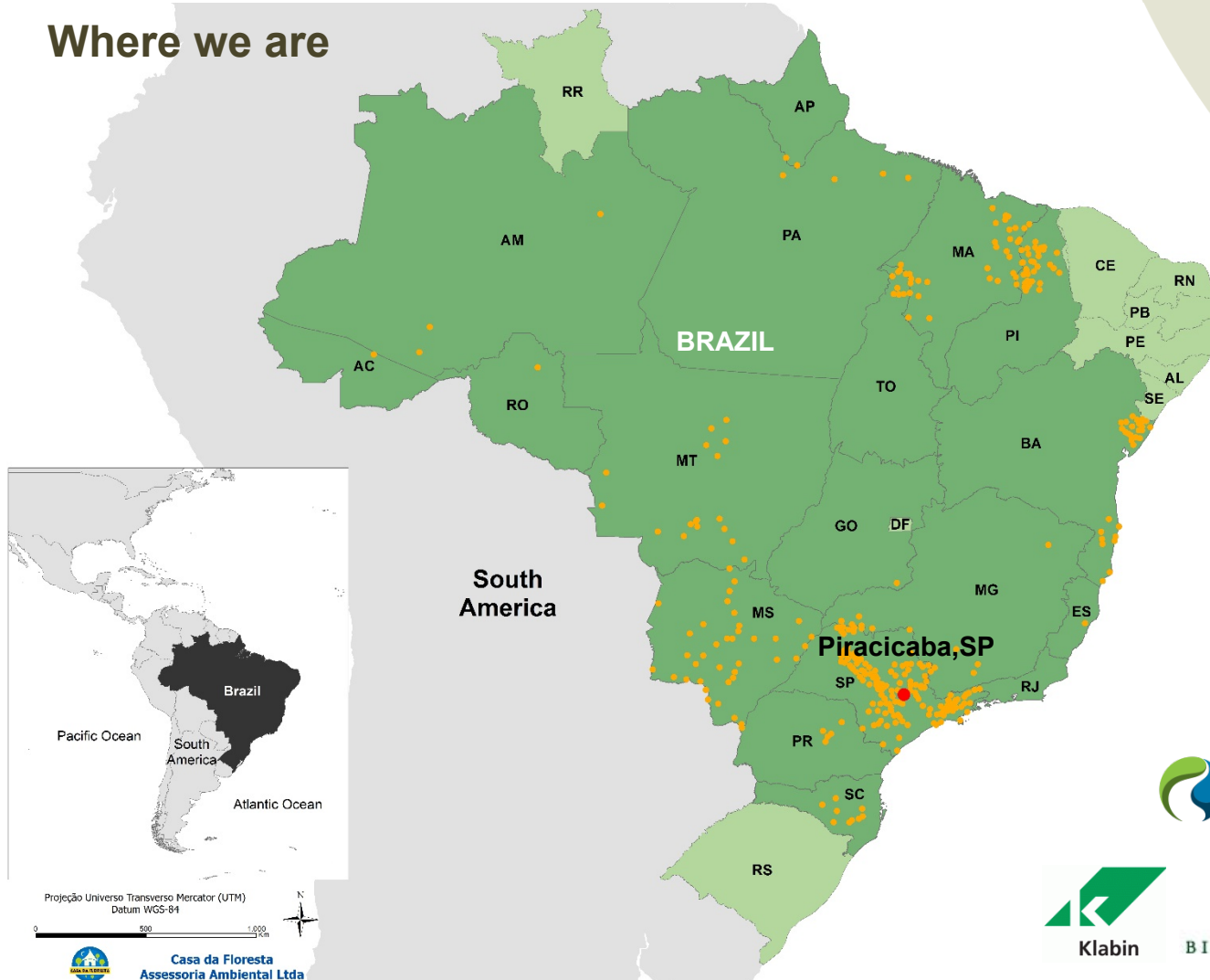




About us

Casa da Floresta Assessoria Ambiental

Where we are



Our partners





Grasslands

Definition by EU Directive 2009/28/EC



_____ **natural**
grassland that would remain grassland
in the absence of human intervention and
which maintains the natural
species composition
and ecological characteristics
and processes





Grasslands

Definition by EU Directive 2009/28/EC



non-natural
grassland that would cease to be grassland in the absence of human intervention; and which is species-rich; and not degraded

Latin America and Caribe

550 million ha





European Grasslands

Regarded as highly biodiverse

1. Council Directive 92/43/EEC - Annexes I and II
2. Directive 2009/147/EC - Annex I

Habitats = Specific Areas in Europe
(and other areas that fulfils the criteria)



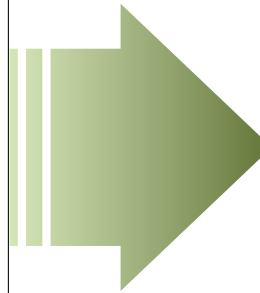
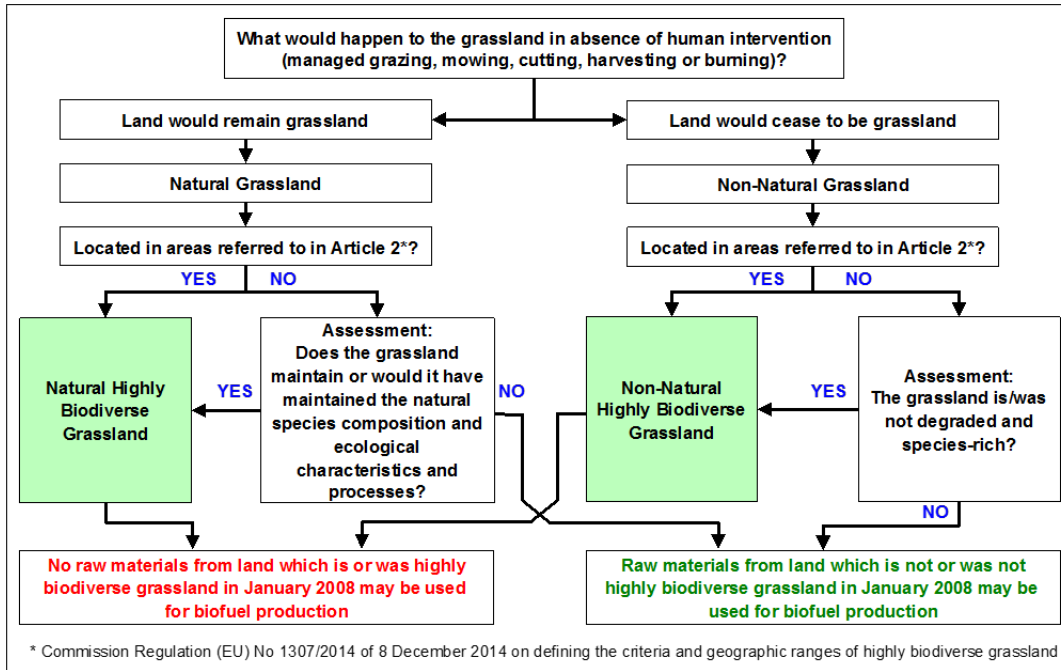
Worldwide grasslands
ISCC EU 202 + Supplement





ISCC Guidance

Assessing the comply within certification

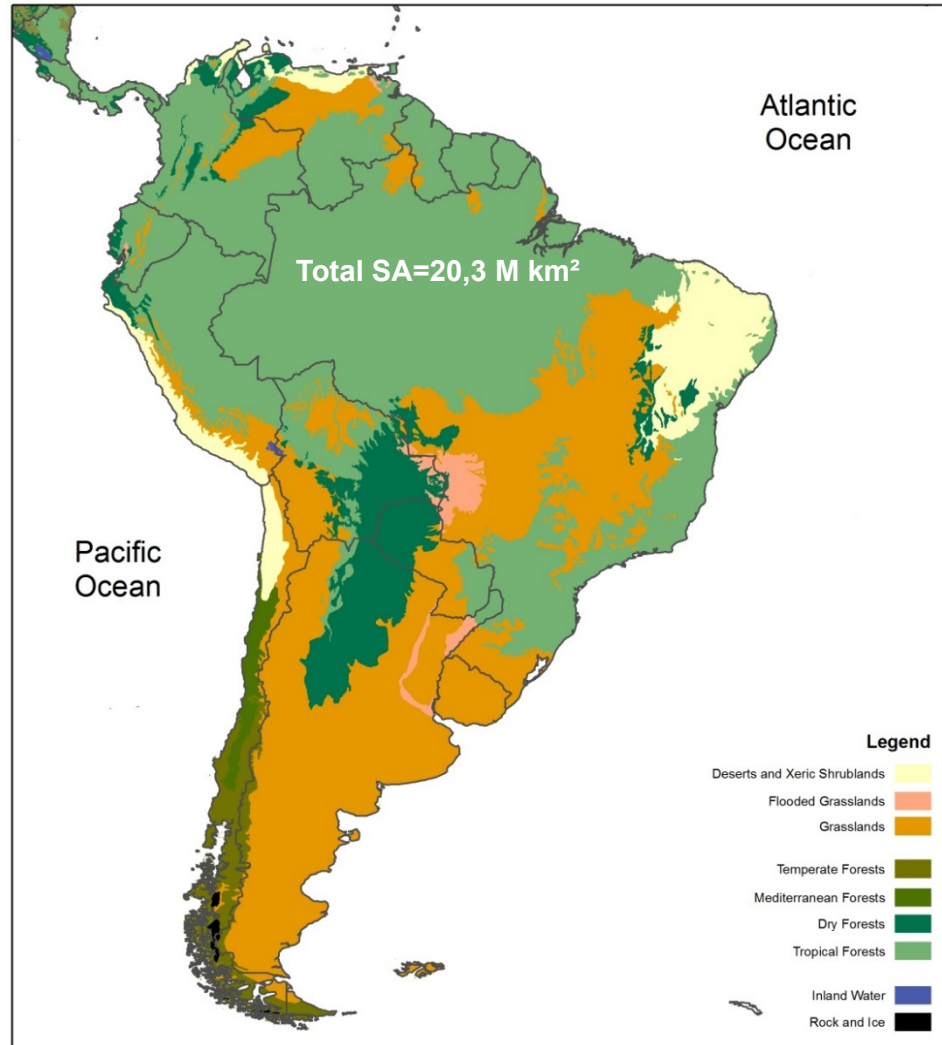


Good for European habitats, but not applied to some situations overseas

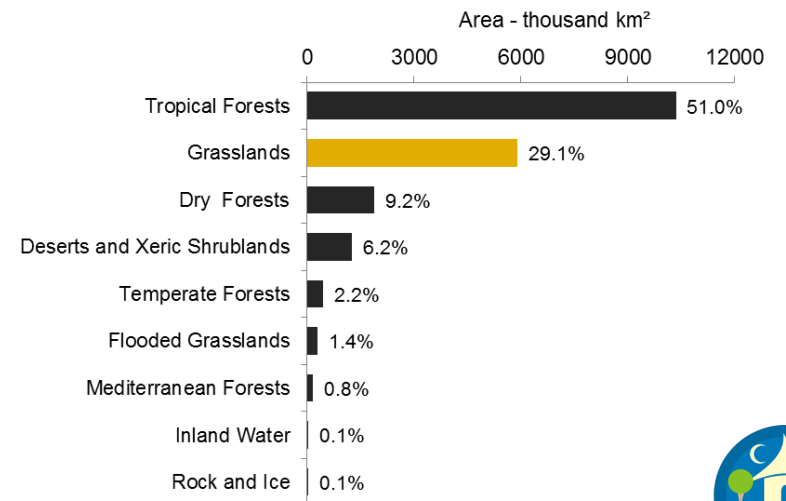


Grasslands outside Europe

Extent of Occurrence of Natural Grassland in SA



Ecoregions in South America





Types of grasslands

Physiognomies of Cerrado Biome

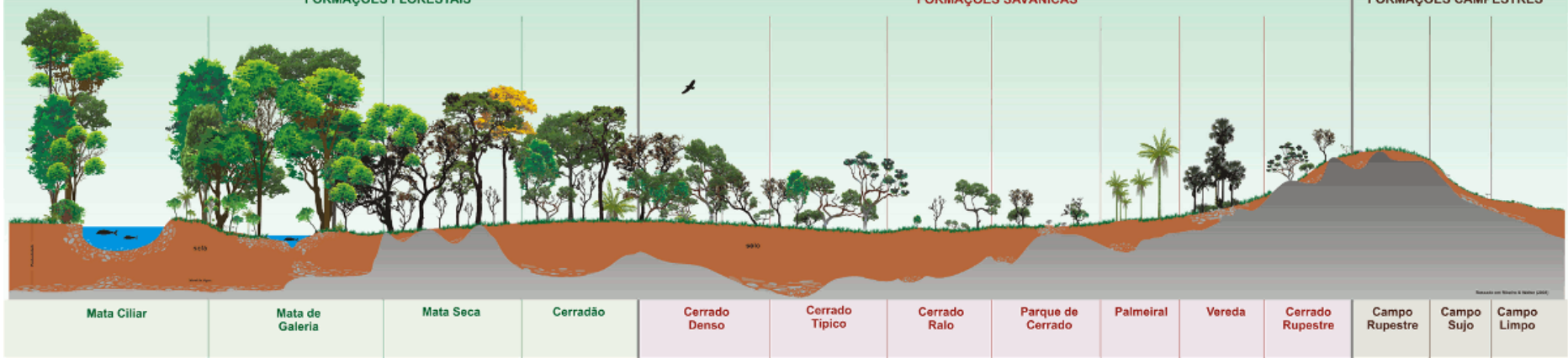
FITOFISIONOMIAS DO BIOMA CERRADO



FORMAÇÕES FLORESTAIS

FORMAÇÕES SAVÂNICAS

FORMAÇÕES CAMPESTRES



Variation of physiognomies
(due to soil, geomorphology and aquatic systems)





Types of grasslands

Physiognomies of Cerrado Biome

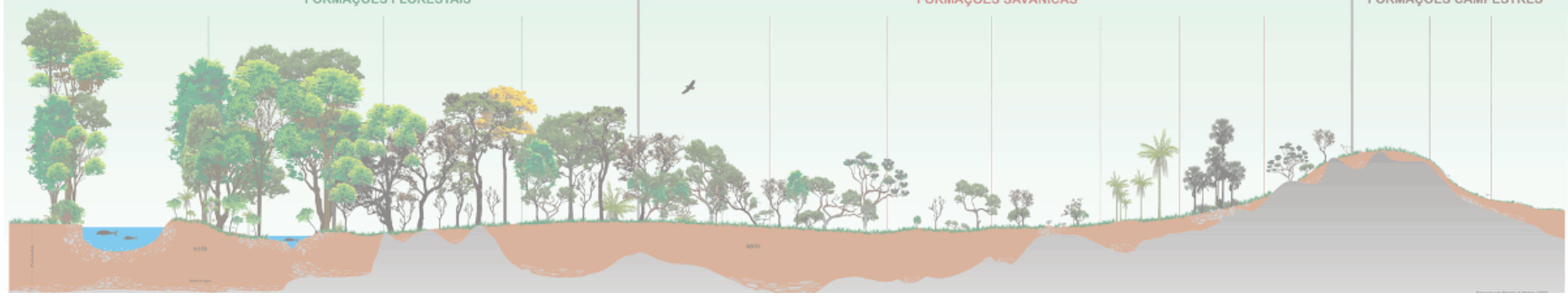
FITOFISIONOMIAS DO BIOMA CERRADO



FORMAÇÕES FLORESTAIS

FORMAÇÕES SAVÂNICAS

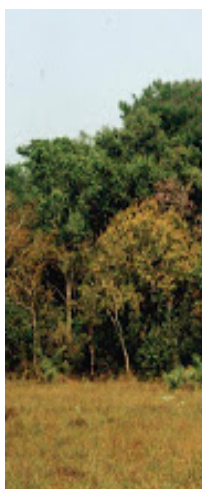
FORMAÇÕES CAMPESTRES



Woody



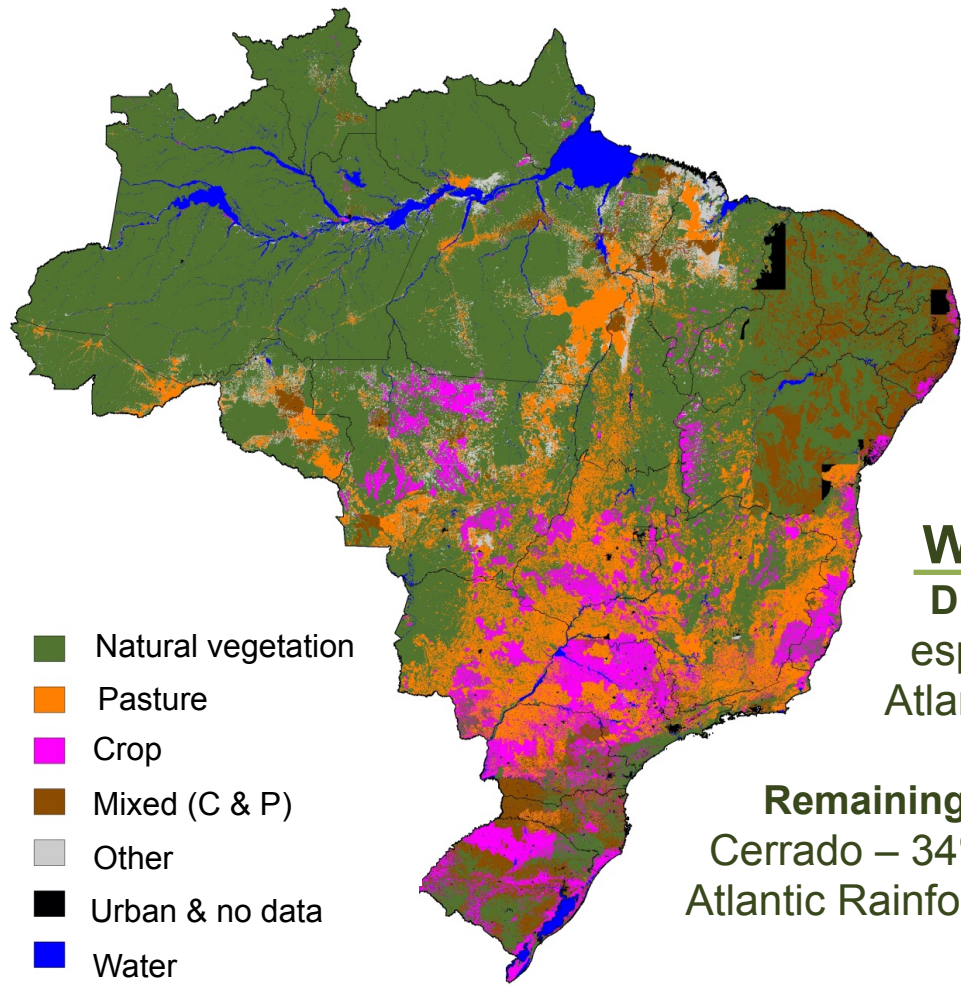
Field





Pastures

A Brazil's case



Where it is

Distribution of anthropogenic pastures especially in the Cerrado and in the Atlantic Rainforest

Remaining areas

Cerrado – 34%
Atlantic Rainforest – 11%





Pasture Land (Cerrado)

Comply with the ISCC Requirements?



Exotic grass (*Urochloa* sp.)

-Would not cease to be a grassland (**non native**)

-Is degraded

-(Probably) not species-rich

Could comply with ISCC

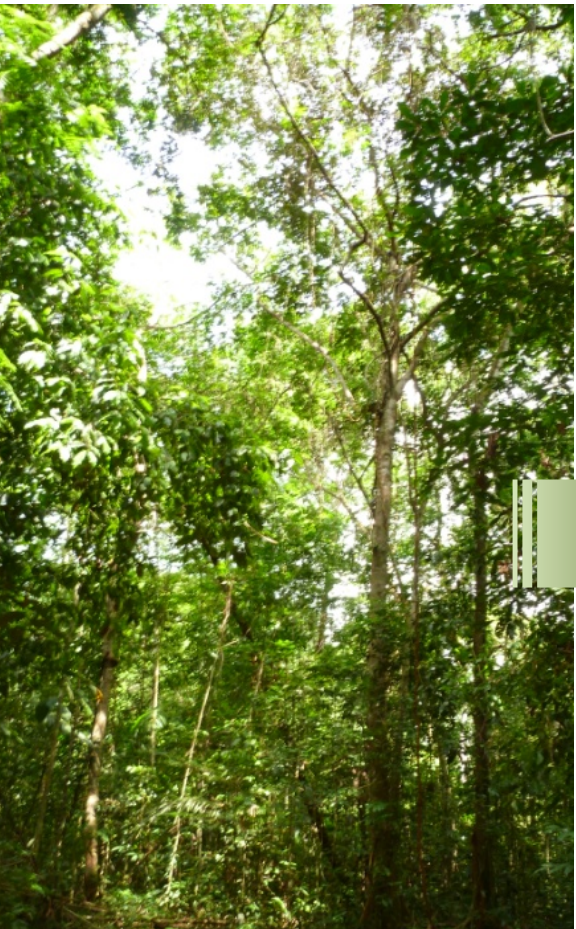
Because it would be just a substitution of commodity
However, it depends on when the conversion has occurred
(Experts assessment could be required)





Pasture Land (Amazonia)

The process – field data



original habitat
(e.g. Amazonia biome)

deforestation
(burning)

pasture
(livestock pasture with exotic grass)



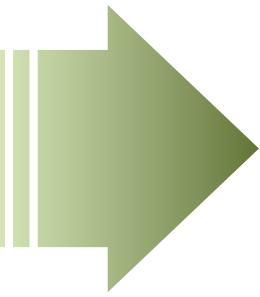


Pasture Land (Amazonia)

The reverse process – due to low productivity



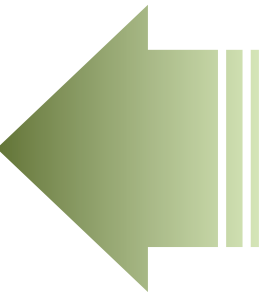
pasture
(low productivity)



dirty pasture
(recently abandoned)



'capoeira'
(shrubs and small trees)



dirty pasture
(bushes and shrubs)

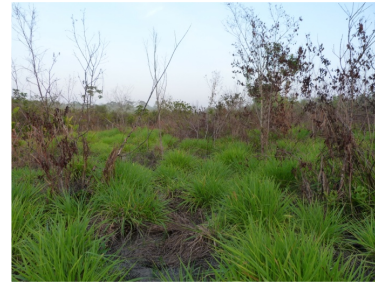




Pasture Land (Amazonia)

Comply with the ISCC Requirements?

Not included



increasing biodiversity

In this case, a forested area that was converted into a pastureland, and if the use for livestock feeding is ceased, can evolve to another plant physiognomy, for example, an **early forest stage** (e.g. the 'capoeira'), but a complete and successful restoration is not easy

Could be certified, if converted before January 2008*

In terms of biodiversity, even that it was a forest, it is not highly biodiverse as a natural habitat is

(Experts assessment could be required)
*Must be concerned about Carbon Stock

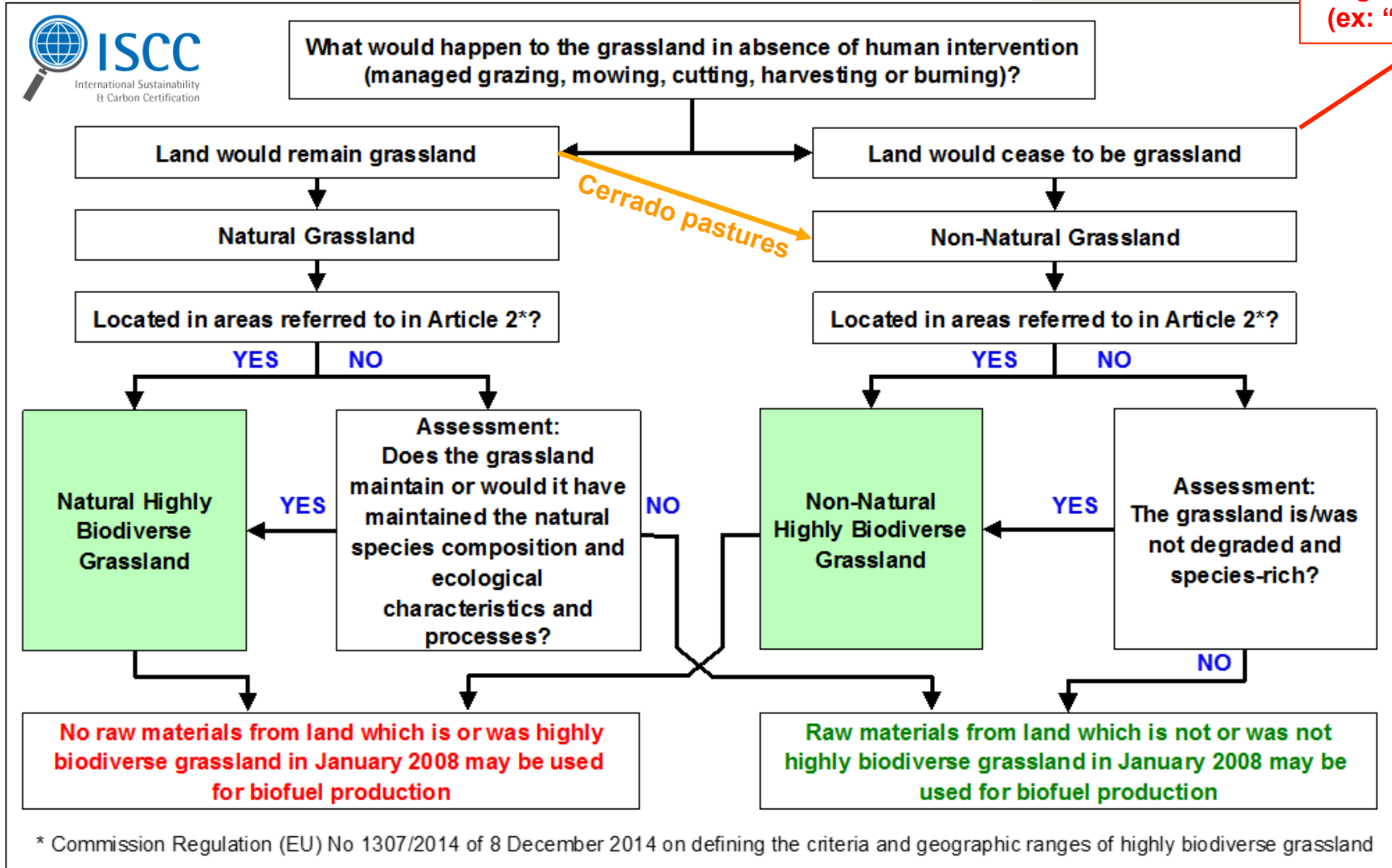




Suggestion

Including another situations on ISCC documentation

Another vegetation type (ex: "capoeira")



Cerrado pastures





Pasture Land

Species-rich definition



- a. a **habitat of significant importance** for critically endangered, endangered or vulnerable species as classified by the International Union for the Conservation of Nature Red List of Threatened Species or other lists with a similar purpose for species or habitats laid down in national legislation or recognised by a competent national authority in the country of origin of the raw material;
- b. a **habitat of significant importance** to endemic or restricted-range species;
- c. a **habitat of significant importance** to intra-species genetic diversity;
- d. a **habitat of significant importance** to globally significant concentrations of migratory species or congregatory species;
- e. a regionally or nationally significant or highly threatened or unique ecosystem.

Too restrictive and vague definition

Could make the ISCC Certification unfeasible in a wide area in South America, where is not highly biodiverse anymore or already degraded





Pasture Land

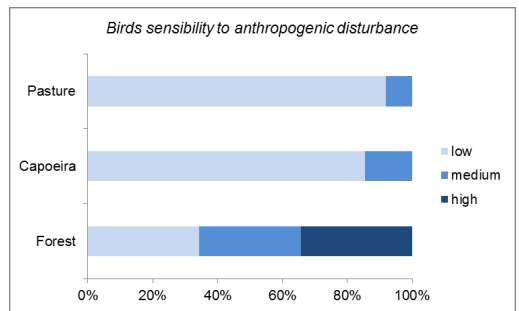
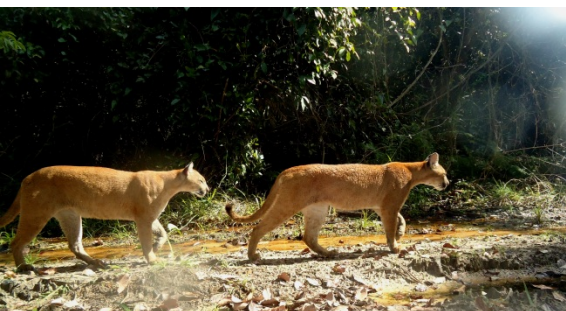
Species-rich definition

The biodiversity should be compared

Areas could be highly biodiverse by UE Directive definition, but if compared to the original habitat it represents only a part of the native environment and biological community



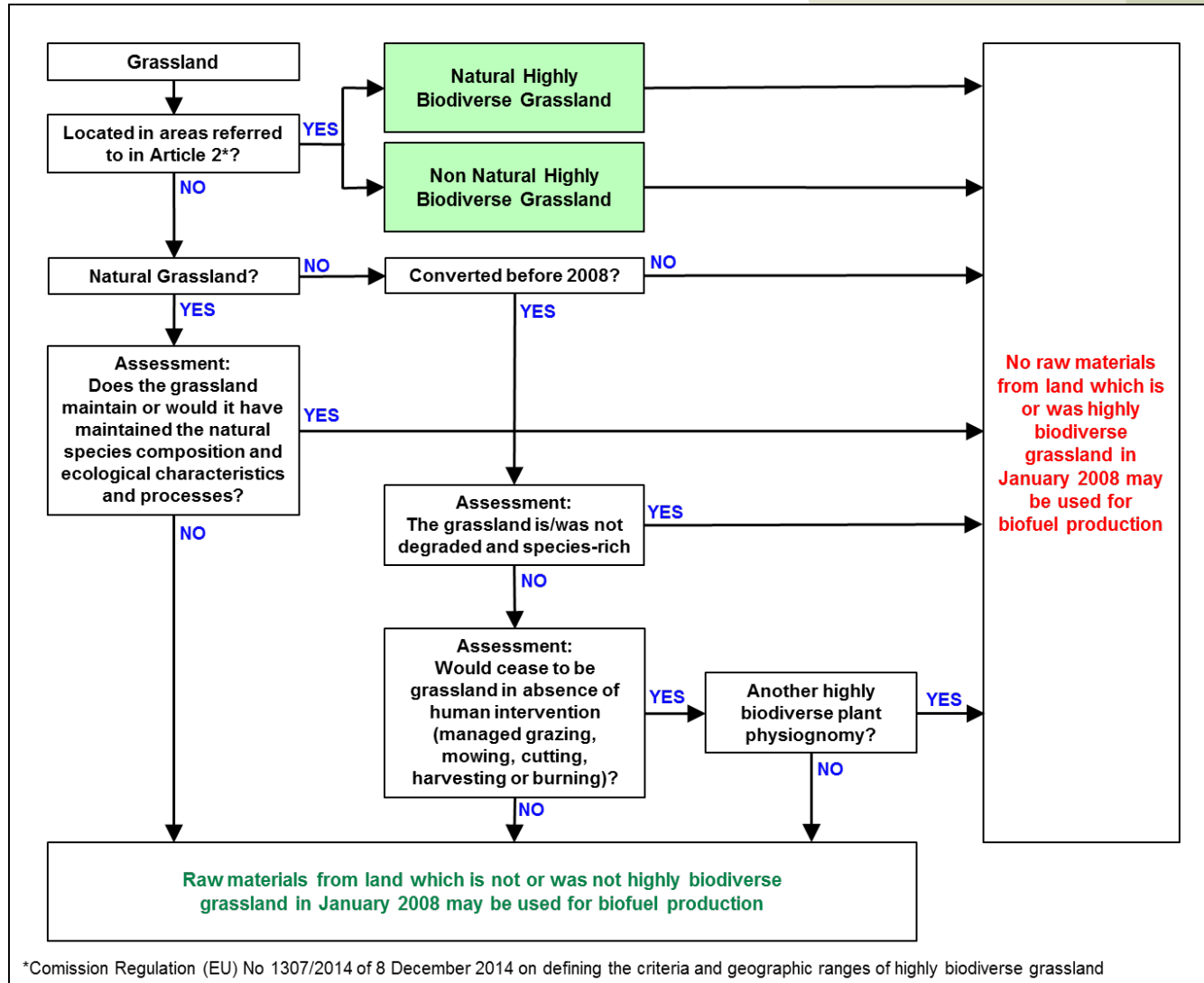
Field assessments must be carried on





Suggestion

An alternative scheme



*Comission Regulation (EU) No 1307/2014 of 8 December 2014 on defining the criteria and geographic ranges of highly biodiverse grassland



Thank you!

Ecologist M. Sc. Elson Fernandes de Lima

Casa da Floresta Assessoria Ambiental Ltda.

elson@casadafloresta.com.br

+55 19 3433-7422

+55 19 996-957-406