

Biodiversity database compilation

© Marcelo Matsumoto

ISCC Principles

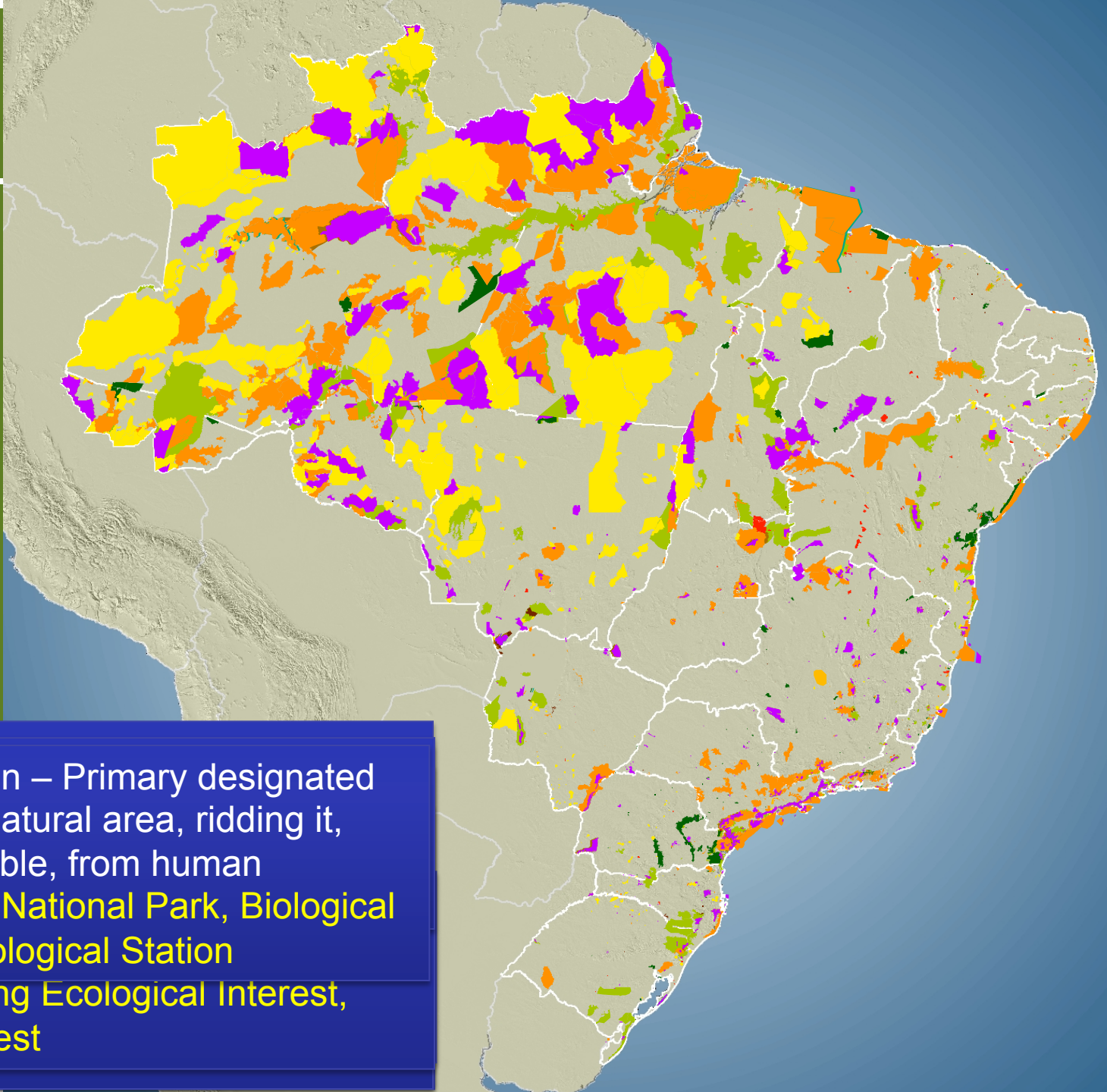
- **PRINCIPLE 1:** Biomass shall not be produced on land with **high biodiversity value** or high carbon stock. HCV areas shall be protected.
- **PRINCIPLE 2:** Biomass shall be produced in an environmentally responsible way. This includes the protection of soil, water and air and the application of Good Agricultural Practices
- **PRINCIPLE 3:** Safe working conditions through training and education, use of protective clothing and proper and timely assistance in the event of accidents
- **PRINCIPLE 4:** Biomass production shall not violate human rights labour rights or land rights. It shall promote responsible labour conditions and workers' health, safety and welfare and shall be based on responsible community relations
- **PRINCIPLE 5:** Biomass production shall take place in compliance with all applicable regional and national laws and shall follow relevant international treaties
- **PRINCIPLE 6:** Good management practices shall be implemented

Objectives

- Highlight important areas for biodiversity conservation in Brazil
- Identify indigenous and traditional communities lands
- Assist auditors and ISCC members to identify important areas for biodiversity for certification purpose

- Defined spatially
- Recognized by national or international entities
 - Protected by law
 - Expert revision

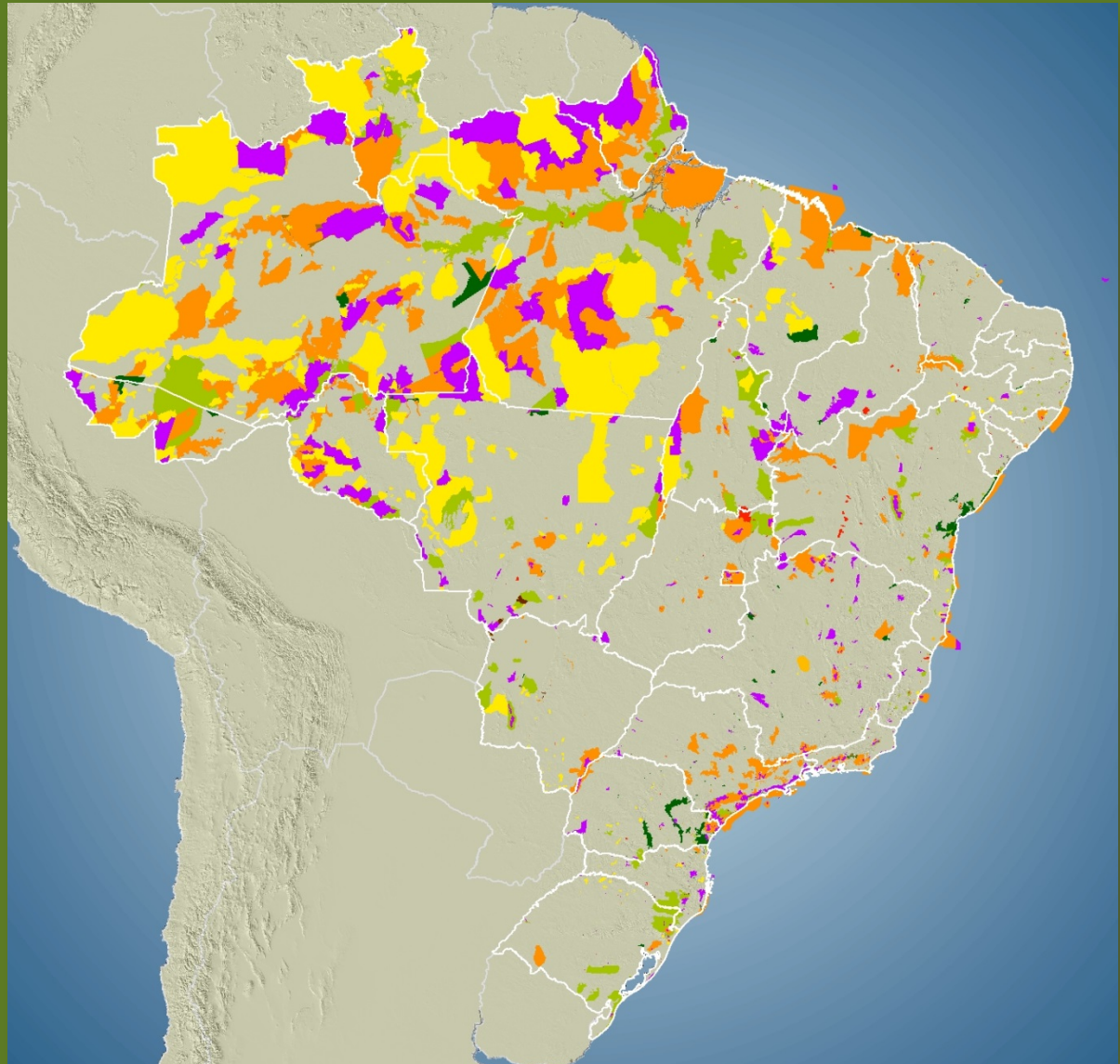
Database	Source
Protected Area – Full Protection	ICMBio (Ministry of Environment)
Protected Area – Sustainable Use	ICMBio (Ministry of Environment)
Indigenous Land	FUNAI
RPPN - Particular Reserve of Natural Heritage	ICMBio (Ministry of Environment)
IBA (Important Bird Areas)	BirdLife – SAVE Brasil
Ramsar	WDPA
World Heritage	WDPA
ZEA (Zero Extinction Alliance)	BirdLife – SAVE Brasil
WDPA	WDPA



Full Protection – Primary designated to preserve natural area, ridding it, when it possible, from human interference. **National Park, Biological Reserve, Ecological Station of Outstanding Ecological Interest, National Forest**

High Importance for Biodiversity Conservation

-  Protected Area - Full Protection
-  AZE
-  World Heritage
-  Indigenous Area
-  IBA
-  Protected Area - Sustainable Use
-  Quilombola
-  RAMSAR
-  RPPN
-  WDPA




Biodiversity database compilation

Type	N. Area	Total Area Million Ha
AZE	27	4.6
World Heritage	7	6.4
Indigenous Land	572	114.0
IBA	235	94.4
Protected Area – Full Protection	498	50.4
RAMSAR	9	6.9
RPPN	247	0.2
Protected Area – Sustainable Use	628	98.0
WDPA	209	5.8

Biodiversity database query

Identify

Identify from:  Biodiversity


- Biodiversity
 - Cerrado Protected Areas: Chapada dos Veadeiros and Emas National Parks
 - Parque Nacional da Chapada dos Veadeiros e Adjacências
 - RPPN Catingueiro
 - Área De Proteção Ambiental Pouso Alto
 - Parque Nacional Da Chapada Dos Veadeiros

Location: 672,741.482 -229,990.168 Meters

Field	Value
OBJECTID	4
Shape	Polygon
NAME	Cerrado Protected Areas: Chapada dos Veadeiros and Emas National Parks
ORIG_NAME	Aires protégées du Cerrado : Parcs nationaux Chapada dos Veadeiros et Emas
COUNTRY	BRA
SUB_LOC	BRA-GO
DESIG	World Heritage Site
DESIG_ENG	World Heritage Site
DESIG_TYPE	International
IUCN_CAT	Not Applicable
STATUS	Heritage
AreaHa	381268.923829
Source	WDPA
CodSource	HTG 4
Shape_Length	5.116043
Shape_Area	0.321207

Identified 5 features

Identify

Identify from:  Biodiversity

- Biodiversity
 - Central Amazon Conservation Complex
 - Parque Nacional do Jaú
 - TAMBOR
 - Parque Nacional Do Jaú

Location: -962,126.259 1,049,023.081 Meters

Field	Value
OBJECTID	3
Shape	Polygon
NAME	Central Amazon Conservation Complex
ORIG_NAME	Complexe de conservation de l'Amazonie centrale
COUNTRY	BRA
SUB_LOC	BRA-AM
DESIG	World Heritage Site
DESIG_ENG	World Heritage Site
DESIG_TYPE	International
IUCN_CAT	Not Applicable
STATUS	Heritage
AreaHa	5097130.98721
Source	WDPA
CodSource	HTG 3
Shape_Length	13.683845
Shape_Area	4.14413

Identified 4 features

Thank you very much!