


# SUSTAINABILITY CHALLENGES in the sugar cane sector in Central America

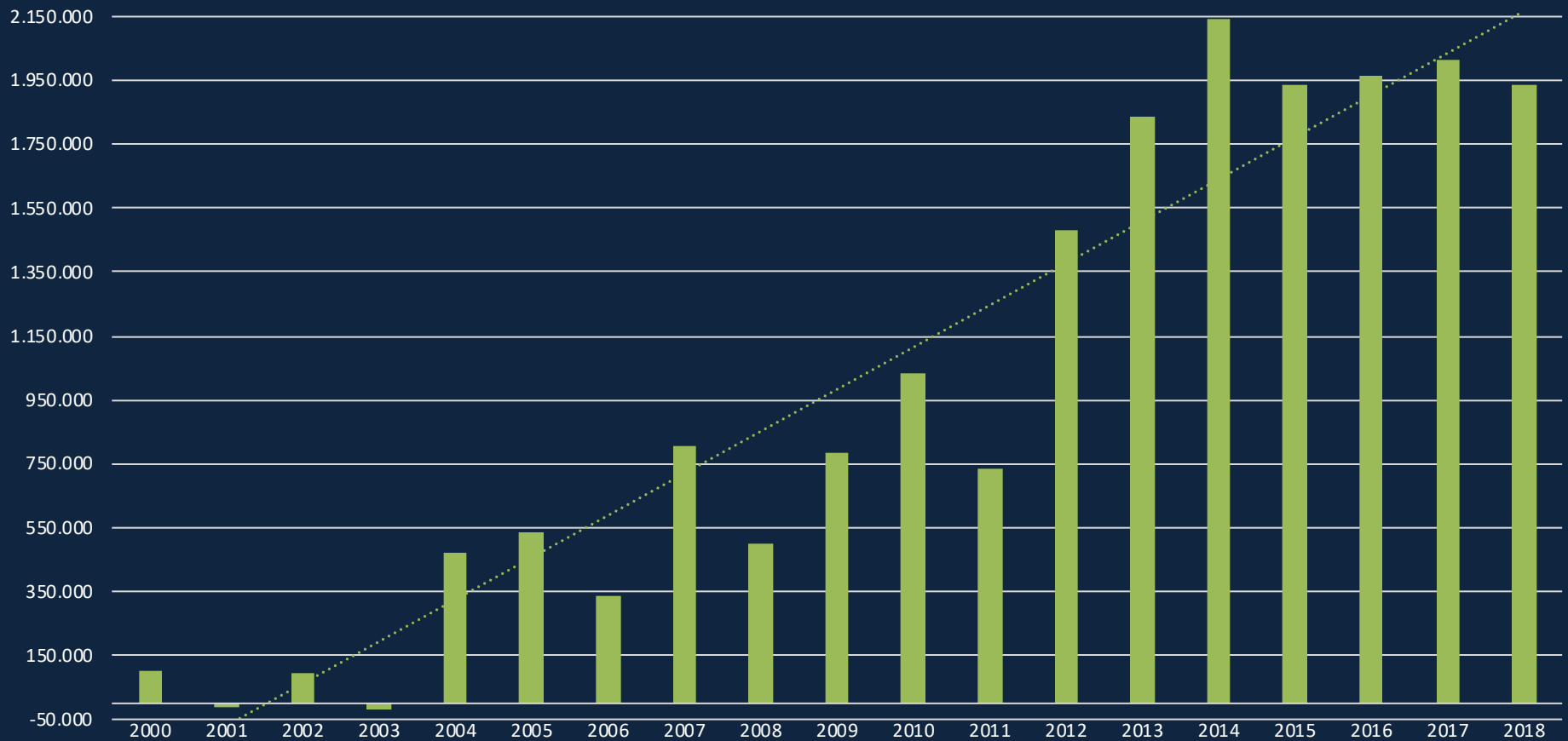


Juan Carlos Fernández Q.  
Azucareros del Istmo Centroamericano  
ISCC Regional Stakeholder Dialogue Latin America  
Antigua Guatemala, January 21, 2020.

- 
- Approximately, 17,000 independent sugarcane producers.
  - 537,304 hectares of sugarcane in crop 2018 / 2019
  - 41 mills
    - The crushing capacity of the mills more than 340k metric tons per day.
  - More than 1.0 million workers – direct and indirect jobs.

# Sugar Production Growth

International Sugar Organization Database – Central American sugar production:  
Guatemala, El Salvador, Honduras, Nicaragua and Costa Rica  
Sugar production growth (base 100 in 1999) – metric tons



2000 - 3,293,950 TM

2018 - 5,129,994 TM

2017 / 2018

Metric Tons (96°)

2018 / 2019

Metric Tons (96°)

Guatemala	2,963,544	3,160,740
El Salvador	784,969	815,230
Honduras	526,153	543,867
Nicaragua	800,417	788,331
Costa Rica	431,172	442,185
Central America	5,506,255	5,750,353

Source: AICA



# Molasses

+2 million mt  
produced on the crop 2018-2019



340.5 million liters  
produced on the crop 2018-2019

# Alcohol

# Cogeneration

- ✓ Installed Capacity – 1,568 MW / h
- ✓ MW delivered to national matrix- 641.4 k (2018-2019)
- ✓ Contribution to electric production by country
  - Guatemala 31%
  - El Salvador 8%
  - Honduras 7%
  - Nicaragua 15%
  - Costa Rica 1%







Guatemala



11 mills

Costa Rica



13 mills

El Salvador



6 mills

**AICA**<sup>®</sup>  
AZUCAREROS DEL ISTMO CENTROAMERICANO

Nicaragua



4 mills

Honduras



7 mills





**Trade** – Promote favorable trade conditions for the sugar sector.

**Sustainability** – Boosting the sustainability of the sugar sector at the regional level

**Sugar and Healthy Lifestyle** – Promote an adequate assessment about the impact of sugar on health.

Different actors and circumstances are promoting the importance of sustainable practices



# SUSTAINABILITY

## Mainstream definition

Economic development activity that meets the needs of the present without compromising the ability of future generations to meet their own needs.

## Environment

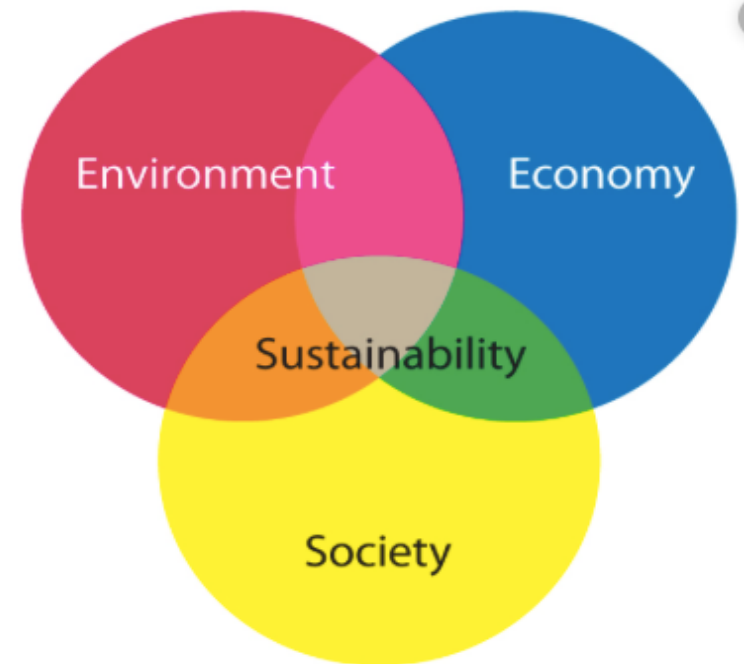
- Water resources management
- Air & GHG emissions
- Soil quality
- Agrochemical use
- Waste management

## Economy

- Economic growth
- Employment generation
- GDP impact

## Society

- Labor compliance
- Property rights
- Community development
- Sugar's impact on health



- ✓ Compliance with regulations
- ✓ Transparency
- ✓ Climate change



# Efforts of the Central American Sugar Sector in Sustainability

## ASAZGUA

Corporate governance policies:

- Labor
- Health and occupational Safety
- HIV in the workplace
- Transportation
- Environmental
- Sugarcane Suppliers

## Fundazúcar.GT

Social development programs

AAES – Fundazúcar.ES  
Manual of Best Practices for  
Sugarcane Cultivation

## LAICA

- Protocolo Sectorial de Sostenibilidad
- Program “Cultivando Futuro”

APAH. Sustainability Principles  
2nd Sustainability Report GRI

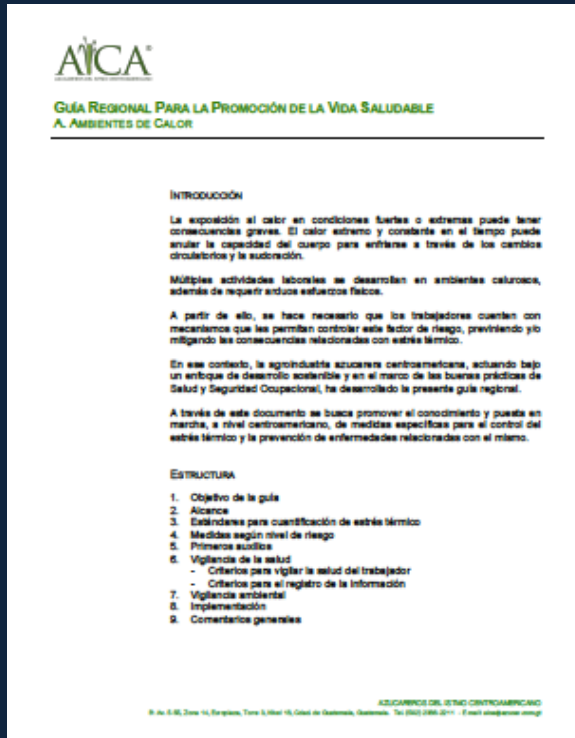
Funazúcar. Social development programs

## CNPA

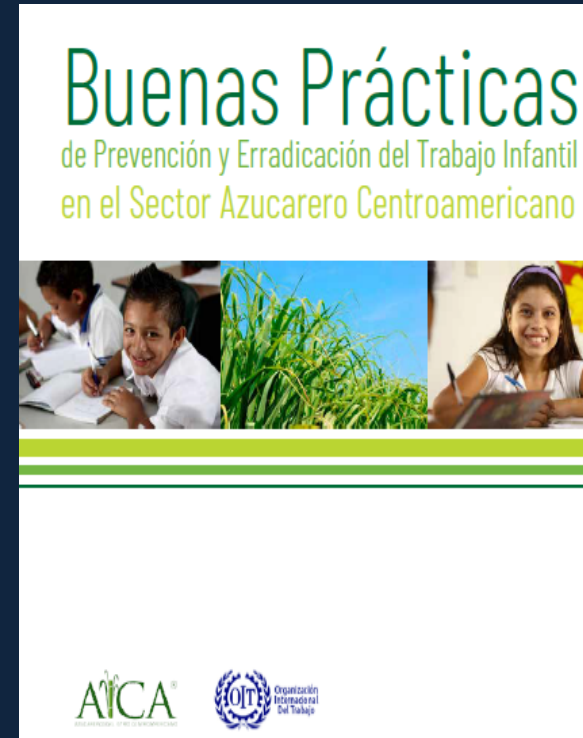
Manual of Best Practices for  
Sugar Production

Panamanian sugar sector  
Efforts implemented by mills





“Regional Guide on Good Practices on Heat Stress” (2016)



“Regional Guide on Good Practices and Lessons Learned in Prevention and Eradication of Child Labor” AICA - ILO (2018)

“Regional Guide of Good Practices in Water Resources Management”  
– *in process* –  
Regional Workshop; Guatemala City, August 2019.





**Trade** – Promote favorable trade conditions for the sugar sector.

**Sustainability** – Boosting the sustainability of the sugar sector at the regional level

**Sugar and Healthy Lifestyle** – Promote an adequate assessment about the impact of sugar on health.





# Our vision to face the challenges on noncommunicable diseases

## Regulations

- Labelling – based on Guideline Daily Amounts (GDA).
- Responsible advertising practices.
- Sports and physical activity in education programs.

## Clear information information to the public:

- Importance of a healthy diet.
- Importance of physical activity.
- The effects of sugar consumption

## All of the above based on:

- Scientific evidence
- Joint work with nutritionists
- Measure success in changing consumer behavior and improving health



AICA<sup>®</sup>

AZUCAREROS DEL ISTMO CENTROAMERICANO