



Shape the future as a member of the ISCC Association



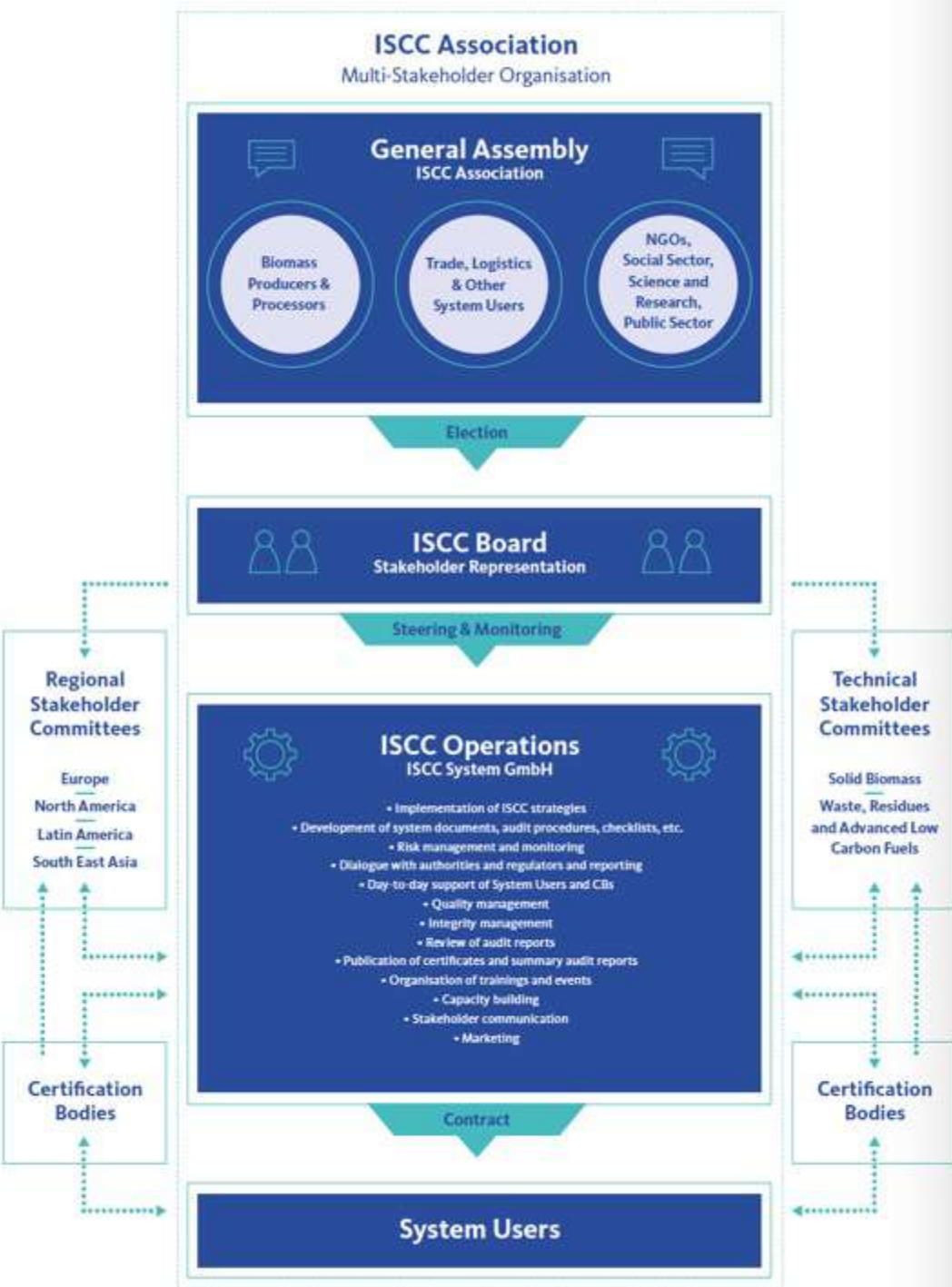
# ISCC is a global sustainability certification system

## ISCC's objectives:

- **Supporting companies to achieve their sustainability targets** and to implement the **SDGs**
- Contributing to the development of the **circular economy and bioeconomy**
- **Verification of the implementation** of social and ecological sustainability criteria
- Monitoring of **deforestation-free supply chains**
- **Protection of high biodiverse** and high **carbon stock land**
- Calculating and reducing **GHG emissions**
- Establishing **traceability** in global supply chains
- Allowing for **credible** and **justified claims** and logo use

# Organisational set up of ISCC

- ISCC is a **multi-stakeholder initiative**
- The ISCC Association includes members from **different stakeholder groups** and is represented by the **ISCC Board**
- Daily operations are carried out by **ISCC System GmbH**, located in Cologne
- Various **stakeholder committees** guarantee active stakeholder dialogue
- The collaboration of all stakeholders and system users guarantees a **continuous improvement** of the standard



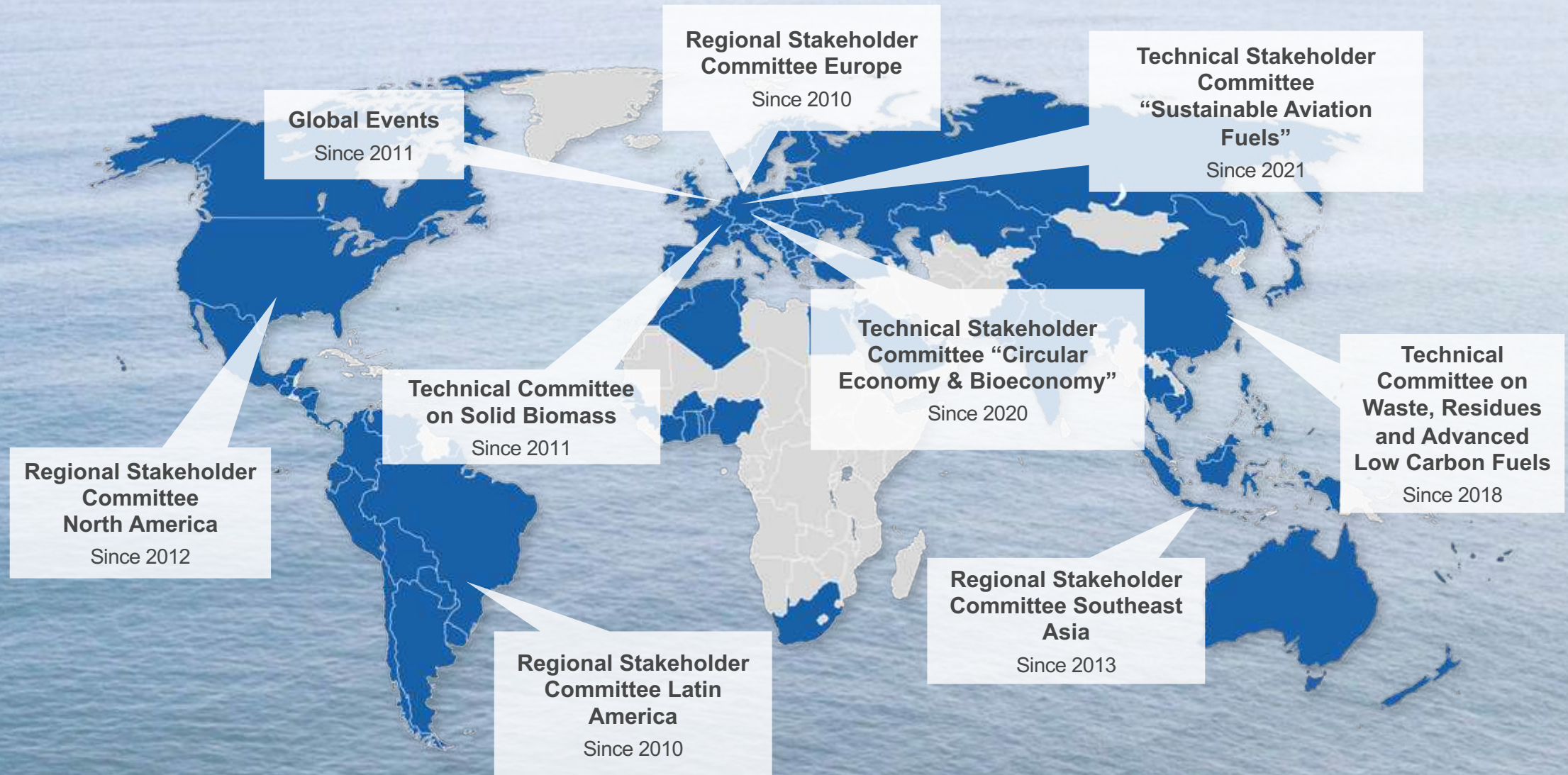


The ISCC Association promotes the sustainable production of biomass, circular materials and renewables

### Tasks of the ISCC Association

- **Ongoing support** of stakeholders who share ISCC's goals
- Establishment of **Regional and Technical Stakeholder Committees** for the discussion of topics with high practical relevance
- **Promotion of the ISCC certification system** for sustainable feedstocks
- Development and **continuous improvement of ISCC**

# ISCC puts major emphasis on a regular and regional stakeholder dialogue



# The ISCC Association is a multi-stakeholder initiative comprised of currently 202 members



As of 11 April 2022

**International Sustainability and Carbon Certification (ISCC)**

Hohenzollernring 72, D-50672 Cologne, Fax: +49 221 9415863, info@iscc-system.org

**Application for membership**

I hereby apply for membership in the International Sustainability and Carbon Certification (ISCC) Association as a full member with all rights in the General Assembly.

Company turnover	Membership fee
<input type="checkbox"/> Company < 10 mill. € turnover	500 €
<input type="checkbox"/> Company > 10 mill. € < 50 mill. € turnover	1.000 €
<input type="checkbox"/> Company > 50 mill. € < 250 mill. € turnover	2.000 €
<input type="checkbox"/> Company > 250 mill. € turnover	3.000 €
<input type="checkbox"/> NGOs, Research, GOs, Associations	250 €
<input type="checkbox"/> Individual	50 €

Personal data:

Name of company (natural or legal person)	
Address	
Postal code, town	
E-mail	
Telephone	
Contact person	Name
	E-mail
	Telephone

Place, Date	Signature
-------------	-----------

Please send this form by fax (+49 221 9415863) or mail or to our email info@iscc-system.org

According to § 33 of the German Data Protection Act, we should like to point out that your personal data is recorded electronically for internal purposes only.



# Benefits of membership in the ISCC Association (ISCC e.V.)

- Privileged access to information
- Advisory services regarding sustainability, chain of custody and GHG
- Possibility to participate in ISCC General Assembly and Technical Committees: Influence strategy and future developments of the ISCC System
- Networking opportunities
- Reduced quantity dependent fees (relevant for processing units)
- Reduced license fees
- Priority registration for training courses
- To become a member of the ISCC Association please fill out the form (ISCC website) and return it by fax or mail to info@iscc-system.org



Thanks for your attention!

---

Follow us on   

[info@iscc-system.org](mailto:info@iscc-system.org)  
ISCC System GmbH