

# Official Launch of the ARIA Platform

## Automatic Risk Assessment for ISCC principle 1

Mohammad Abdel-Razek

TC SEA

18 October 2022, Hybrid Meeting

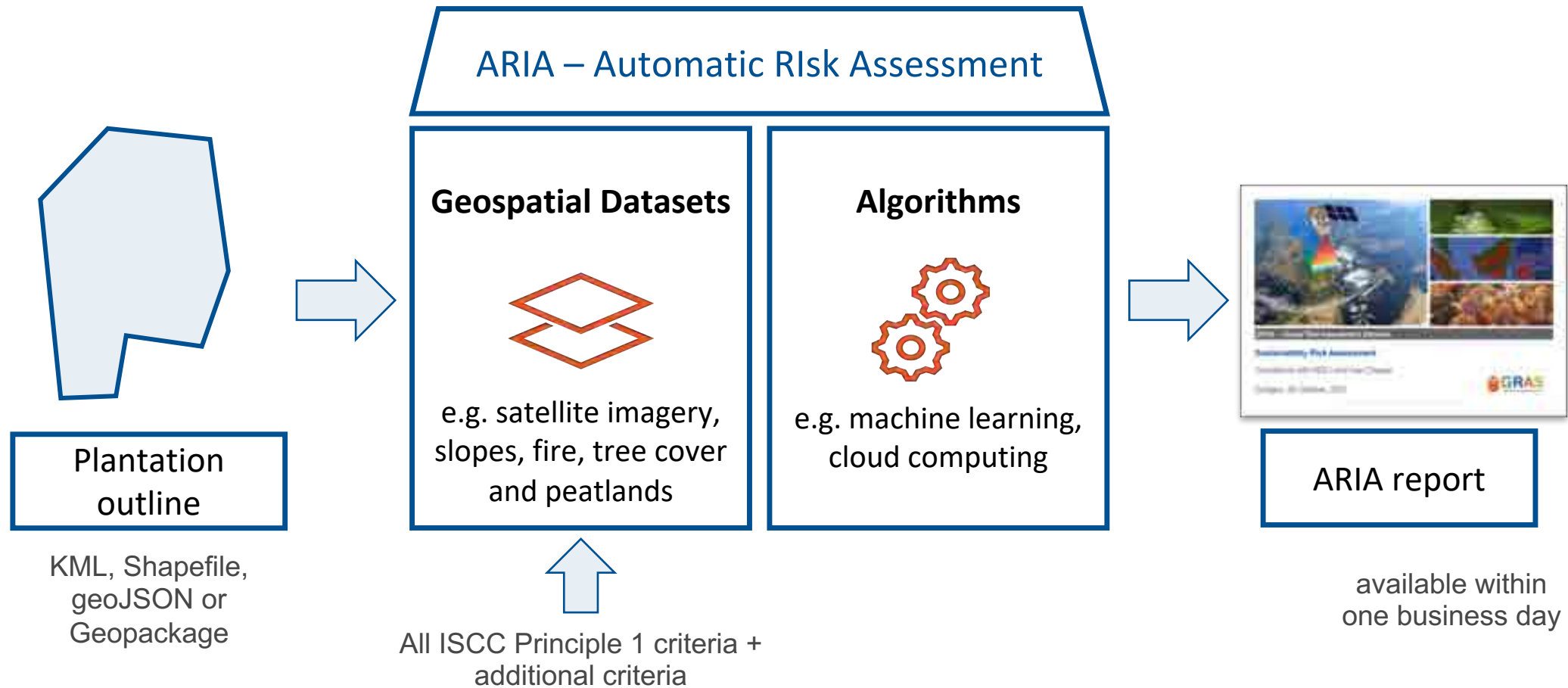
## ARIA: Automatic Risk Assessment Platform

- The ARIA Platform is in compliance with ISCC Principle 1 and in general with EU Renewable Energy Directive (RED) and available for palm plantations in Indonesia and Malaysia
- The platform can generate fully automated, comprehensive risk reports at the plantation level within the one-business day
- ARIA also include other datasets that supports ISCC users getting to know other environmental risks on their plantations, e.g., fire.
- ARIA is not limited to ISCC, and could also be used for any RED voluntary certification scheme

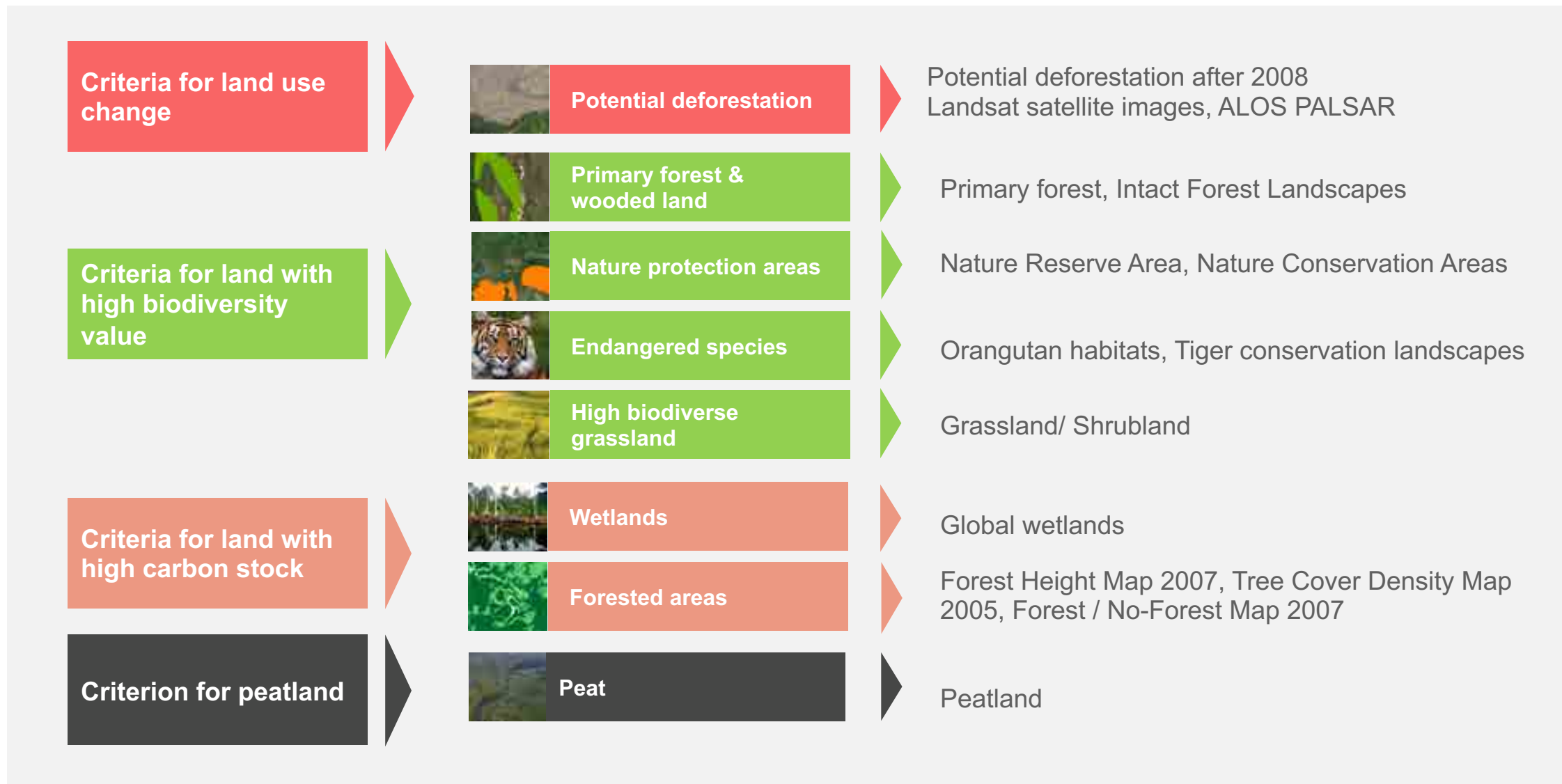
# Why ARIA?

- Level playing field among system users and CBs
- Support ISCC system users
- Simplify auditing and reduce auditing costs
- Building block towards including further legislation/due-diligence requirements

# ARIA is an integrated system that includes both geospatial data and algorithms for cost-effective report generation



# All four RED/ISCC P1 criteria are included in ARIA

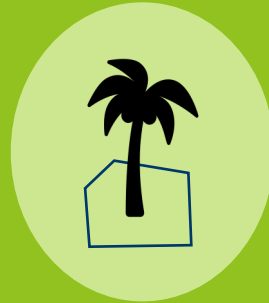


# Automated Risk Assessment of Palm Plantations with a few steps



Step 1:  
Create account

Create an account with  
your email address



Step 2:  
Upload plantation outline

Add one or multiple  
plantations/estates



Step 3:  
Select settings

Confirm outlines and  
execute payment



Step 4:  
Receive report

View results within one  
business day

# ISCC's timeline for the use of ARIA

- Webinar with Stakeholders (25<sup>th</sup> October 2022, 9:30 am Berlin – 2:30 pm Indonesia – 3:30 pm Malaysia)
- ISCC system users can request free ARIA vouchers for auditing in all three phases
- **Phase 1 Voluntary: 1<sup>st</sup> November 2022 – 31<sup>st</sup> January 2023**
  - ARIA online training (1<sup>st</sup> November 2022)
  - ISCC system users may get vouchers for recertification and initial process
  - Feedback is highly appreciated
- **Phase 2 Transition: 1<sup>st</sup> February 2023 – 30<sup>th</sup> April 2023**
  - Auditors are encouraged to attend ARIA training
  - ARIA use is recommended for recertification and initial certification audits
- **Phase 3 Mandatory: starting from 1<sup>st</sup> May 2023 in Indonesia and Malaysia**
  - ARIA training mandatory to auditors
  - All ISCC system users provide the ARIA report as a part of the auditing process

# ARIA Demo





Thank you very much!

---

GRAS Global Risk Assessment Services GmbH  
Hohenzollernring 72, 50672 Cologne, Germany

Email: [info@gras-system.org](mailto:info@gras-system.org), Website: [www.gras-system.org](http://www.gras-system.org)